

Generic build instructions – Workbench with drawers and storage shelf

Before you commence the assembly process, we recommend that you read these instructions thoroughly beforehand to familiarize yourself with the assembly process and to also check that you have the correct components.

We highly recommend that any assembly is carried out on a flat, level surface if possible and that you use another person to assist you if necessary.

You can check our **YouTube channel** for assemble video, click on the link below:

[Workbench with drawers and storage shelf](#)

Package contents

1x Tabletop

1x Base shelf (for double shelf version 2x)

1x Back panel (for versions with back panel)

2x Sets of legs

1x short brace and 1x long brace

1x Middle braces

Bundle with drawer parts

Tools required

Electric screwdriver (No.2 Pozi bit) or

Screwdriver

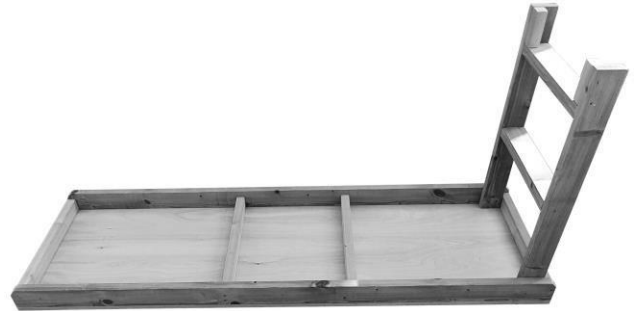


Step 1



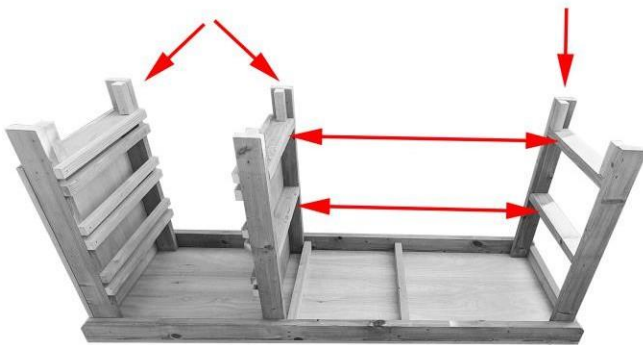
Lay the top upside down on a flat even surface.

Step 1.1



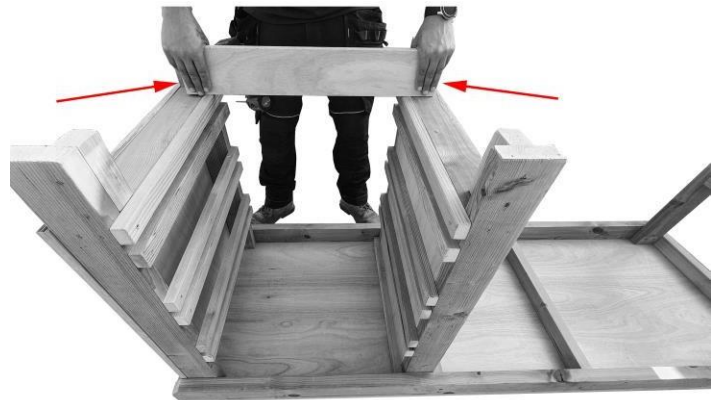
Place leg in position as shown, **please note you can use either leg with or without shelving rails**. Ensure the leg is pushed into the corner. Secure with the supplied screws use pre-drilled guide holes.

Step 1.2



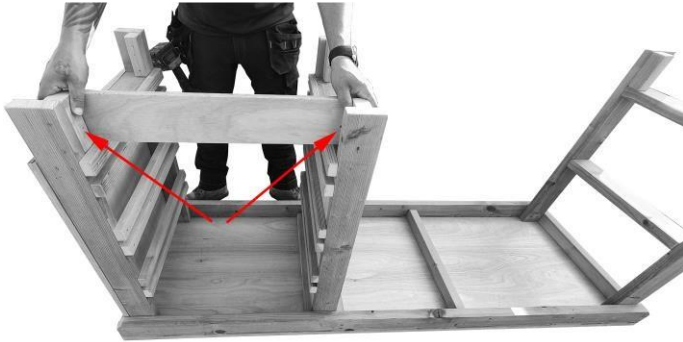
Place middle brace and end leg into place as shown in the picture. Make sure that shelf braces are facing each other as per picture. Push all parts flush with tabletop supports and secure into position as per step 1.1.

Step 2



Workbenches are designed in a way that you can have shelving storage on left-hand side or right-hand side. Place front-bottom panel towards you to have shelving on right hand side and secure with provided screws.

Step 2



Place front-bottom panel away you to have cupboard on left hand side and secure with provided screws.

Step 2.1



Flip workbench face down. Your front-bottom panel should be facing floor.

Step 3



Now, secure back panel into place with provided screws. Make sure that back panel is flush with end leg and middle brace.

Step 4



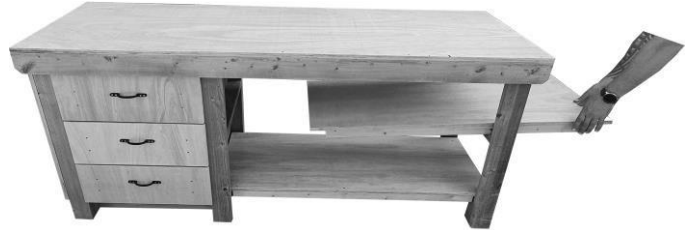
At this stage, your workbench should look like this.
*Picture shows storage shelving on the right-hand side.
Now, proceed to drawer assembly, please check separate build instructions at the bottom of the page.

Step 5



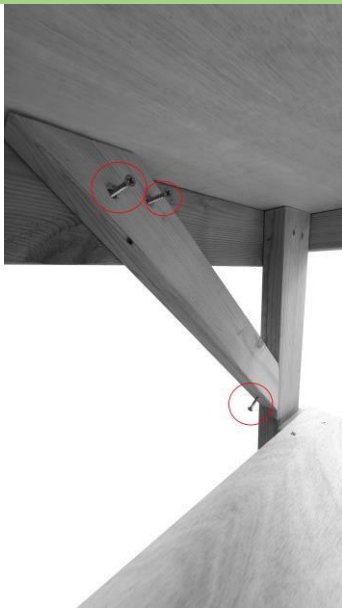
When you done assembling drawers, slide them into position.

Step 6



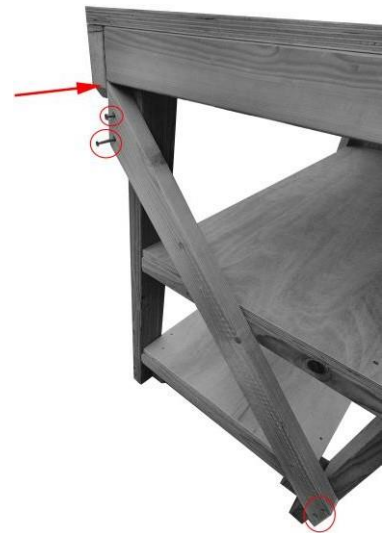
Now, slide in shelf, and secure with provided screws. ***If you have double shelf version repeat this step twice.**

Step 7



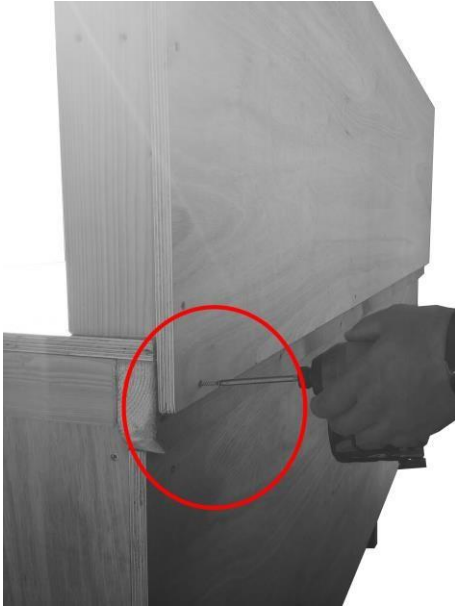
Secure small back brace as shown in the picture. Make sure brace is flush with tabletop and side of the leg upright.

Step 8



Now, secure end brace as shown in the picture. Make sure that brace is pushed flush with tabletop and aligned with leg upright.

Step 9



If you chose workbench with back panel, please put into place as shown in the picture and secure it with golden screws from the back.

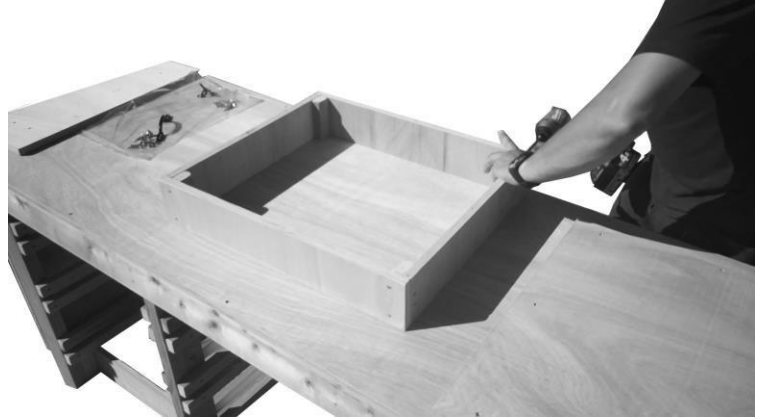
Drawer assembly

Step 1



Take all parts for the drawers and arrange as showed in the picture.

Step 1.1



Secure sides with golden screws using pre-drilled guide holes. Make sure that all panels are flush with each other.

Step 1.2



Put base as shown in the picture and use two provided battens from each side to get correct distance from each end and secure with provided screws.

Step 1.3



Now, flip your drawer base down and place one batten at the back and one at the front to raise the drawer.

Step 1.4



Place drawer front panel and make sure it is even spaced out on both sides. Secure with provided screws. **Repeat steps 1 to 1.4 to complete rest of the drawers.**

Your workbench is now completed!

We hope that you found your product quick and easy to assemble but if not and you require further assistance or have any questions you can contact us via details above.

Also, you can check our **YouTube channel** for assemble videos, click on the link below:

<https://www.youtube.com/watch?v=rdEh10QskO8>

Or

Type in YouTube search box **Arbor Garden Solutions**