

Generic build instructions – Workbench with drawers and storage lockable cupboard

Before you commence the assembly process, we recommend that you read these instructions thoroughly beforehand to familiarise yourself with the assembly process and to also check that you have the correct components. If for any reason you need assistance, you can find our contact details on the top of page of these instructions.

We highly recommend that any assembly is carried out on a flat, level surface if possible and that you use another person to assist you if necessary.

You can check our **YouTube channel** for assemble video, click on the link below:

[Wooden Workbench With Lockable Storage Cupboard and Drawers](#)

Package contents

1x Tabletop
1x Back panel (for versions with back panel)
2x Sets of legs
1x Middle braces (for 3ft version workbench do not have middle brace)
Bundle with drawer parts

Tools required

Electric screwdriver (No.2 Pozi bit) or Screwdriver



Step 1



Lay the top upside down on a flat even surface.

Step 1.1



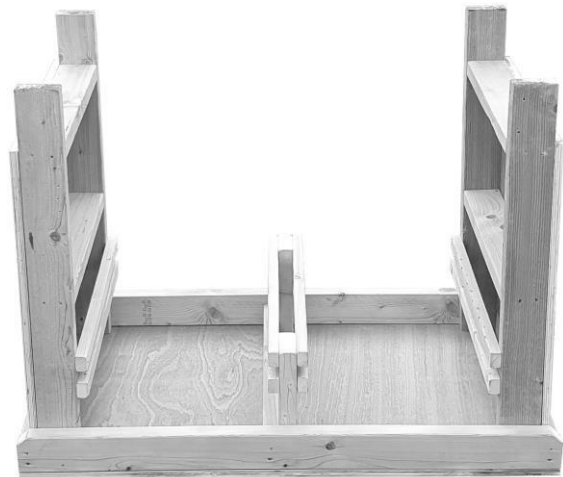
Place leg in position as shown. Ensure the leg is pushed into the corner.

Step 1.2



Secure with the supplied screws use pre-drilled guide holes.

Step 1.3



Place middle brace and last leg into position. Ensure that middle brace is as shown in the picture. Also push all parts flush with tabletop support and secure into position as shown in the step 1.2 **(3ft version workbench do not have middle brace)**

Step 2



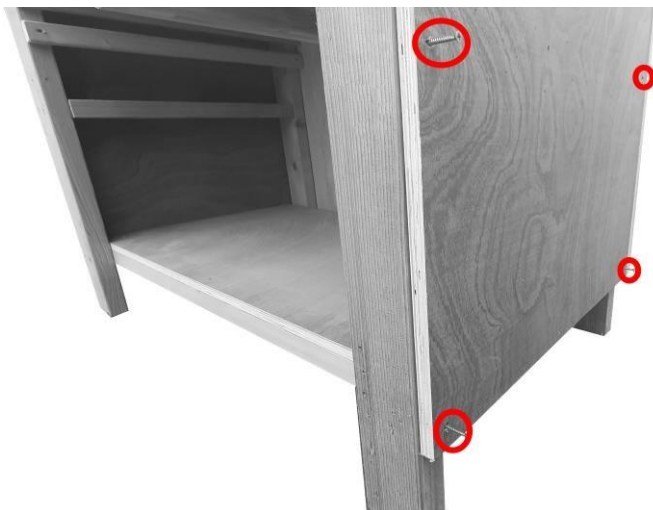
Flip workbench face down. Secure back panel as shown. Use pre-drilled guide holes and flip workbench back on its feet.

Step 3



At this stage, your workbench should look like this.

Step 4



Now, undo one of the side panels (left or right side does not make difference).

Step 5



Slide base shelf into position as shown and secure with screws, use pre-drilled guide holes. If you have double shelf option, repeat this step twice. **When shelf is secure, please secure side panel back.**

Step 6



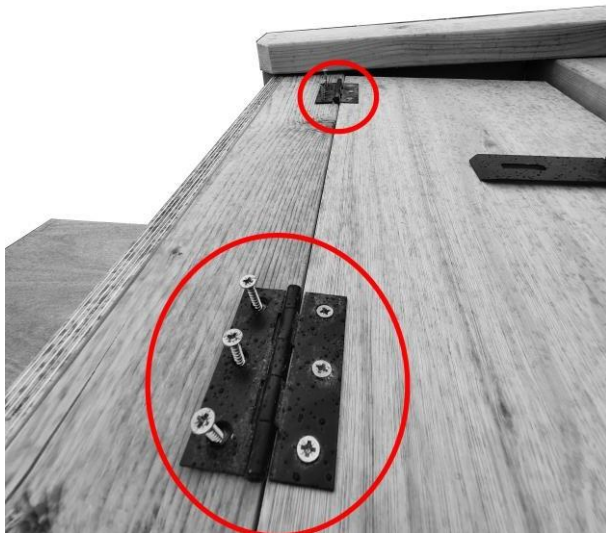
Step 7



At this stage, your workbench should look like this. **Now, proceed to drawer's assembly, please look at the bottom of the build instruction.**

At this stage, your workbench should look like this.

Step 8



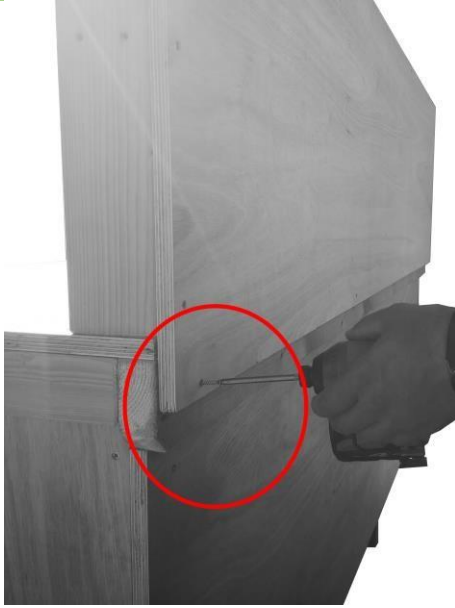
Now, secure cupboard door into place. **This step might require assistance.**

Step 9



Measure distance for hasp catch and mark with pen. Secure with provided screws as shown in the picture.

Step 10



If you chose workbench with back panel, please put into place as shown in the picture and secure it with golden screws from the back.

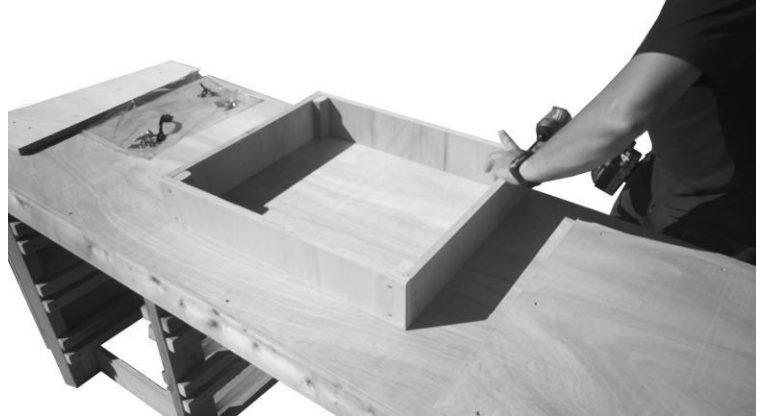
Drawer assembly

Step 1



Take all parts for the drawers and arrange as showed in the picture.

Step 1.1



Secure sides with goldens screws using pre-drilled guide holes. Make sure that all panels are flush with each other.

Step 1.2



Put base as shown in the picture and use two provided battens from each side to get correct distance from each end and secure with provided screws.

Step 1.3



Now, flip your drawer base down and place one batten at the back and one at the front to raise the drawer.

Step 1.4



Place drawer front panel and make sure it is even spaced out on both sides. Secure with provided screws. **Repeat steps 1 to 1.4 to complete rest of the drawers.**

Your workbench is now completed!

We hope that you found your product quick and easy to assemble but if not, remember you can always check our YouTube channel for assembly video – **just type into YouTube search “Wooden Workbench With Lockable Storage Cupboard and Drawers”**

Or click on the YouTube link below:

<https://www.youtube.com/watch?v=F4YhkqvR7hY>

Or if you require further assistance or have any questions you can contact us via details above.