

Storage Box

Before you commence the assembly process, we recommend that you read these instructions thoroughly beforehand to familiarize yourself with the assembly process and to also check that you have the correct components. If for any reason you need assistance, you can find our contact details on the top of page of these instructions.

We highly recommend that any assembly is carried out on a flat, level surface if possible and that you use another person to assist you if necessary.

You can check our **YouTube channel** for assemble video, click on the link below:

[Wooden Outdoor Storage Box](#)

Package contents

1x Top
2x Side Panels
2x Front Panels
1x Base
Bundle with fixings

Tools required

Electric screwdriver (No.2 Pozi bit) or
Screwdriver

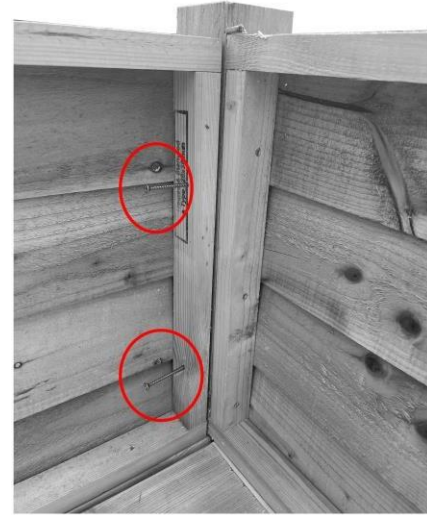


Step 1



Lay the top upside down on a flat even surface. Place all four sides as shown in the picture.

Step 1



Secure each side panel with provided screws, use pre-drilled guide holes. Make sure that panels are flush with the edge of the corner posts.

Step 2



Now, secure back panel to the lid brace (brace is made of 38mm x 89mm timber plank). Also make sure that you sides are equally spaced out on both sides.

Step 3



At this stage your storage box should look like this. Now, flip storage box on it's feet. ***You might need assistance at this stage.**

Step 4

Now, open lid and insert base panel.

Step 4.1

Secure base with provided screws, via pre-drilled holes.
(guide holes will be pre-drilled on the angle)

Your storage bench is now completed!

We hope that you found your product quick and easy to assemble but if not, remember you can always check our YouTube channel for assembly video – **just type into YouTube search “Arbor Garden Solutions – Wooden Outdoor Storage Box”**

Or press the link below:

[Wooden Outdoor Storage Box - YouTube](#)

Or if you require further assistance or have any questions you can contact us via details above.