

## **Generic build instructions – Workbench with drawers and functional cupboard**

Before you commence the assembly process, we recommend that you read these instructions thoroughly beforehand to familiarize yourself with the assembly process and to also check that you have the correct components. If for any reason you need assistance, you can find our contact details on the top of page of these instructions.

We highly recommend that any assembly is carried out on a flat, level surface if possible and that you use another person to assist you if necessary.

You can check our **YouTube channel** for assemble video, click on the link below:

[Wooden workbench with drawers and functional cupboard](#)



**Package contents**

1x Tabletop  
1x Back panel (for versions with back panel)  
2x Sets of legs  
2x Middle braces (for 5ft/6ft version  
workbenches there will be only one middle  
brace)  
Bundle with drawer parts  
Cupboard:  
1x Cupboard top  
2x Sets of legs  
1x Door  
1x Back  
1x Base shelf

**Tools required**

Electric screwdriver (No.2 Pozi bit) or  
Screwdriver

**Step 1**

Lay the top upside down on a flat even surface.

**Step 1.1**

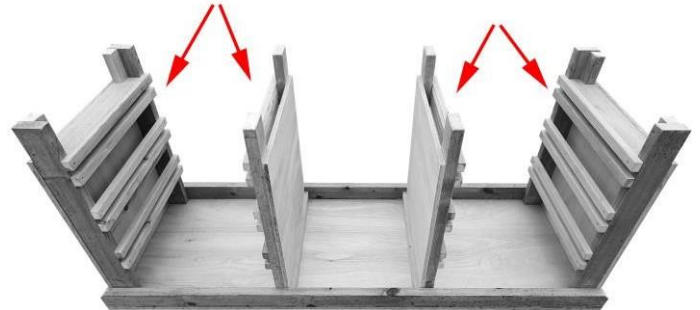
Place leg in position as shown. Ensure the leg is pushed into the corner.

### Step 1.2



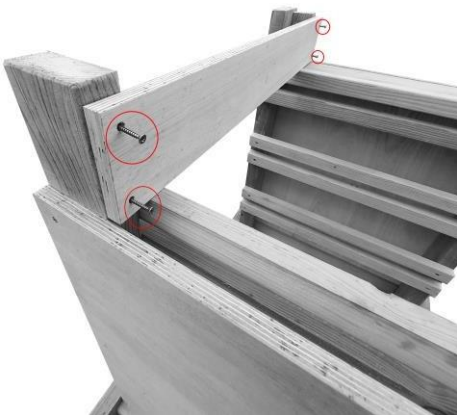
Secure with the supplied screws use pre-drilled guide holes.

### Step 1.3



Place both middle braces and last leg into position. Ensure that middle braces are as shown in the picture, also push all parts flush with tabletop support and secure into position as shown in the step 1.2 **(for 4ft/5ft/6ft version workbenches there will be only one middle brace)**

### Step 2



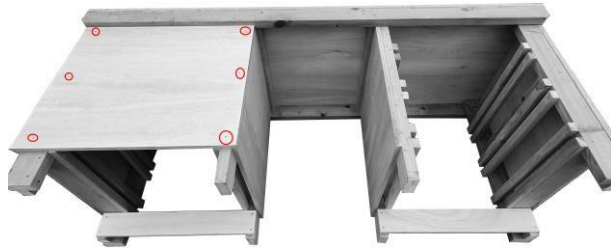
Place front-bottom and secure with provided screws. Repeat this step for the other side. **Make sure that distance for drawers are evenly spaced out.**

### Step 3



At this stage, your workbench should look like this.

## Step 4



Flip workbench face down. Your front-bottom panel should be facing floor. Secure back panels on both sides as shown. Use pre-drilled guide holes and flip workbench back on its feet. **Now, proceed to drawer assembly, please check separate build instructions at the bottom of the page.**

## Step 5



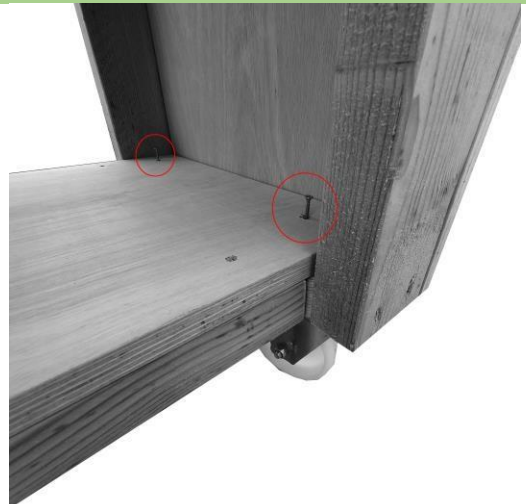
At this stage, your workbench should look like this. **Now, proceed to cupboard assembly.**

## Step 6



Place cupboard top on your workbench and place legs into position. Ensure that leg is pushed flush and secure with provided screw via pre-drilled guide holes.

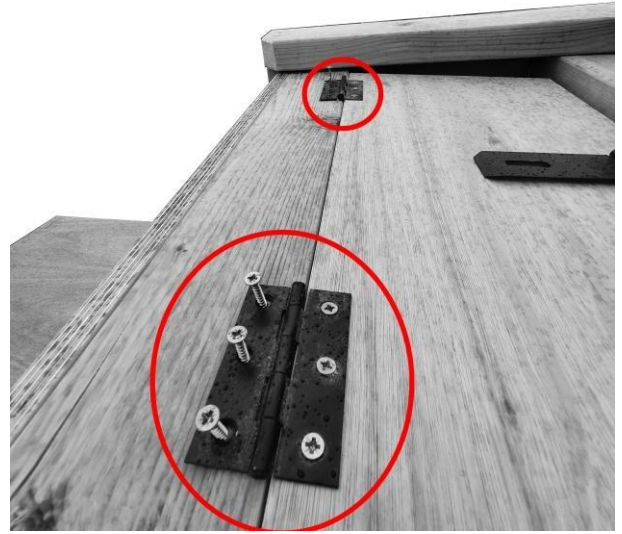
## Step 6.1



Place cupboard back on its feet and slide the base shelf. Secure with provided screws via provided guide holes.

**Step 6.2**

Place cupboard as shown in the picture and secure back panel with screws via provided guide holes.

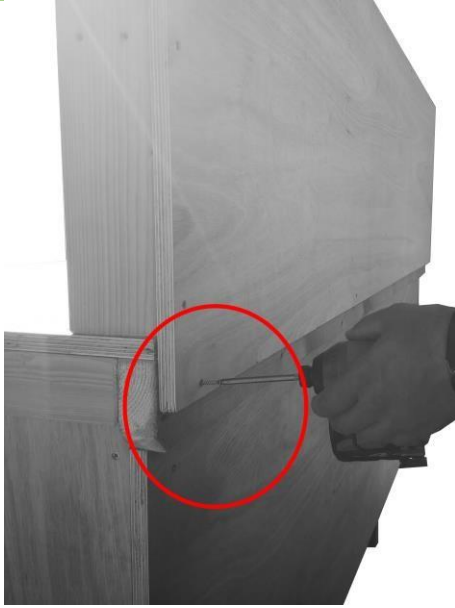
**Step 6.3**

Now, secure cupboard door into place. **This step might require assistance.**

**Step 6.4**

Measure distance for hasp catch and mark with pen.  
Secure with provided screws as shown in the picture.

## Step 7



If you chose workbench with back panel, please put into place as shown in the picture and secure it with golden screws from the back.



## **Drawer assembly**

### **Step 1**



Take all parts for the drawers and arrange as showed in the picture.

### **Step 1.1**



Secure sides with goldens screws using pre-drilled guide holes. Make sure that all panels are flush with each other.

### **Step 1.2**



Put base as shown in the picture and use two provided battens from each side to get correct distance from each end and secure with provided screws.

### **Step 1.3**



Now, flip your drawer base down and place one batten at the back and one at the front to raise the drawer.

### Step 1.4



Place drawer front panel and make sure it is even spaced out on both sides. Secure with provided screws. **Repeat steps 1 to 1.4 to complete rest of the drawers.**

### **Your workbench is now completed!**

We hope that you found your product quick and easy to assemble but if not and you require further assistance or have any questions you can contact us via details above.

Also, you can check our **YouTube channel** for assemble videos, click on the link below:

<https://www.youtube.com/watch?v=iNeBx7KZnTw>

Or

Type in YouTube search box **Arbor Garden Solutions.**