

## **Generic build instructions – Workbench with drawers and cupboard**

Before you commence the assembly process, we recommend that you read these instructions thoroughly beforehand to familiarize yourself with the assembly process and to also check that you have the correct components. If for any reason you need assistance, you can find our contact details on the top of page of these instructions.

We highly recommend that any assembly is carried out on a flat, level surface if possible and that you use another person to assist you if necessary.

You can check our **YouTube channel** for assemble video, click on the link below:

[Workbench with drawers and cupboard](#)



**Package contents**

1x Tabletop  
1x Base shelf (for double shelve version 2x)  
1x Back panel (for versions with back panel)  
2x Sets of legs  
2x Middle braces (for 4ft/5ft/6ft version  
workbenches there will be only one middle  
brace)  
1x Door  
Bundle with drawer parts

**Tools required**

Electric screwdriver (No.2 Pozi bit) or  
Screwdriver

**Step 1**

Lay the top upside down on a flat even surface.

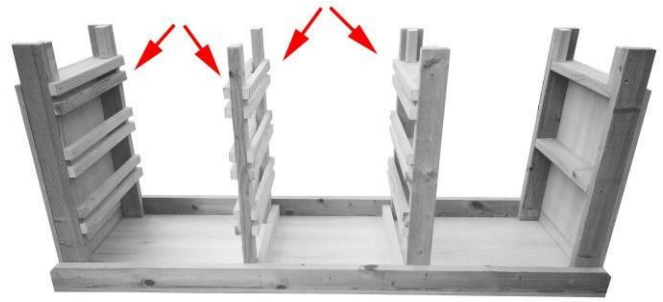
**Step 1.1**

Place leg in position as shown, **please note you can use either leg with or without shelving rails**. Ensure the leg is pushed into the corner.

**Step 1.2****Step 1.3**

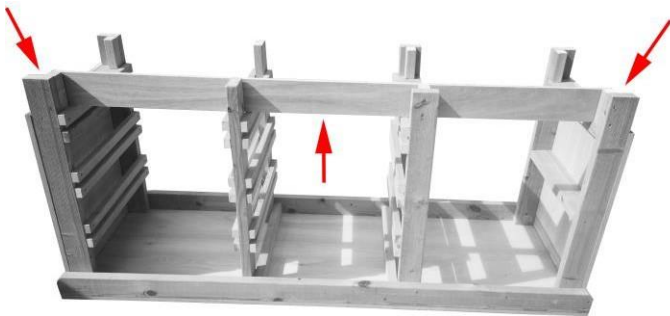


Secure with the supplied screws use pre-drilled guide holes.



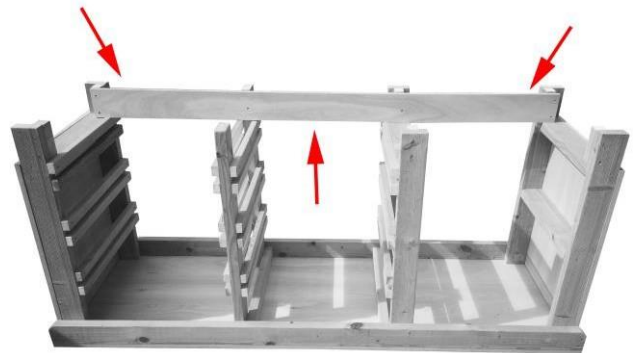
Place both middle braces and last leg into position. Ensure that middle braces are as shown in the picture, also push all parts flush with tabletop support and secure into position as shown in the step 1.2 **(for 4ft/5ft/6ft version workbenches there will be only one middle brace)**

## Step 2



**Workbenches are designed in a way that you can have cupboard on left-hand side or right-hand side.** Place front-bottom panel towards you to have cupboard on left hand side and secure with provided screws. **Make sure that distance for drawers are evenly spaced out.**

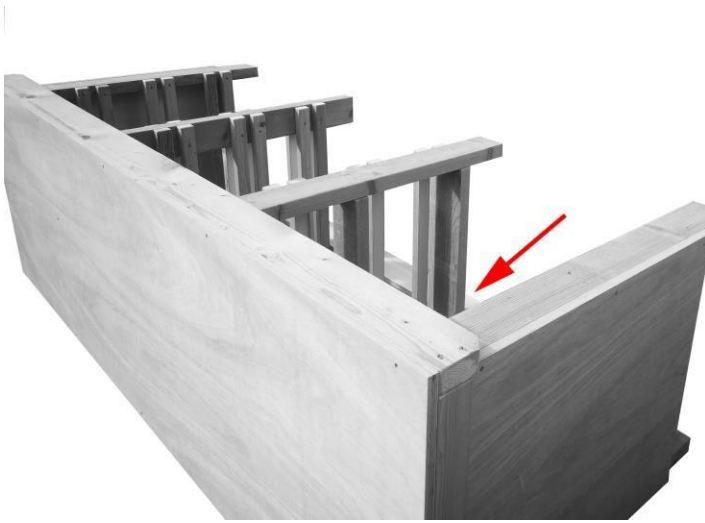
## Step 2.1



Place front-bottom panel away from you to have cupboard on right hand side and secure with provided screws. **Make sure that distance for drawers are evenly spaced out.**

## Step 3

## Step 4



Flip workbench face down. Your front-bottom panel should be facing floor.



Now, secure back panel into place with provided screws.

### Step 5



### Step 6



At this stage, your workbench should look like this.

\*Picture shows cupboard on the right-hand side. **Now, proceed to drawer assembly, please check separate build instructions at the bottom of the page.**

When you done assembling drawers, slide base in shelf into position and secure with provided screws. **If you have double shelf option, repeat this step twice.**

**Step 7**

Slide in complete drawers into place and at this stage your workbench should look like this.

**Step 8**

Now, secure cupboard door into place. **This step might require assistance.**

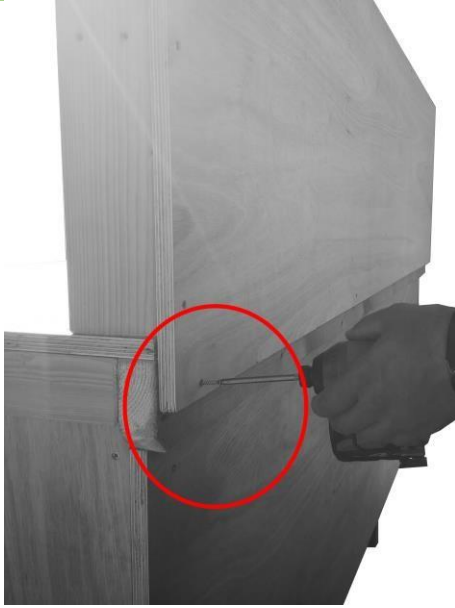
**Step 9**

Measure distance for hasp catch and mark with pen.

**Step 10**

Secure into place with provided screws.

## Step 11



If you chose workbench with back panel, please put into place as shown in the picture and secure it with golden screws from the back.



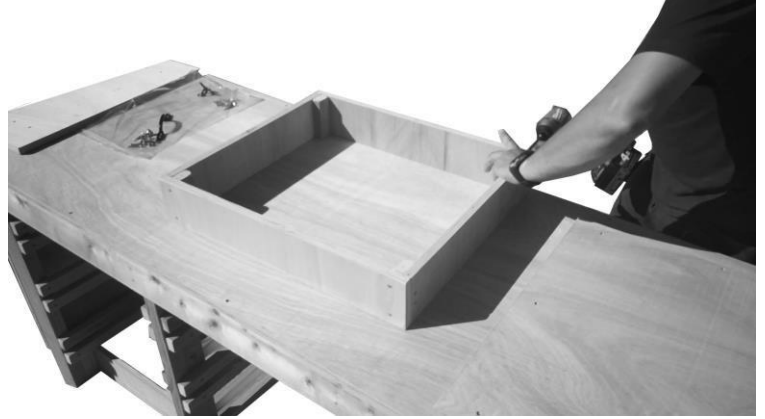
## Drawer assembly

### Step 1



Take all parts for the drawers and arrange as showed in the picture.

### Step 1.1



Secure sides with golden screws using pre-drilled guide holes. Make sure that all panels are flush with each other.

### Step 1.2



Put base as shown in the picture and use two provided battens from each side to get correct distance from each end and secure with provided screws.

### Step 1.3



Now, flip your drawer base down and place one batten at the back and one at the front to raise the drawer.

### Step 1.4



Place drawer front panel and make sure it is even spaced out on both sides. Secure with provided screws. **Repeat steps 1 to 1.4 to complete rest of the drawers.**

### **Your workbench is now completed!**

We hope that you found your product quick and easy to assemble but if not and you require further assistance or have any questions you can contact us via details above.

Also, you can check our **YouTube channel** for assemble videos, click on the link below:

[https://youtu.be/qKSmXhBvo\\_o](https://youtu.be/qKSmXhBvo_o) OR

Or

Type in YouTube search box **Arbor Garden Solutions.**