

Workbench With Lockable Cupboard Assembly instructions

Before you commence the assembly process, we recommend that you read these instructions thoroughly beforehand to familiarize yourself with the assembly process and to also check that you have the correct components. If for any reason you need assistance, you can find our contact details on the top of page of these instructions.

We highly recommend that any assembly is carried out on a flat, level surface if possible and that you use another person to assist you if necessary for your convenience all guide holes are pre-drilled.

You can check our **YouTube channel** for assembly video.

[Please click here](#)

Package contents:

- 2x Legs
- 1x Base
- 1x Bench Top
- 1x Cupboard back panel
- 2x Cupboard doors
- 1x Back panel
- Package with screws

Tools required:

Electric screwdriver with No2 Pozidrive bit or No2 Pozidrive screwdriver

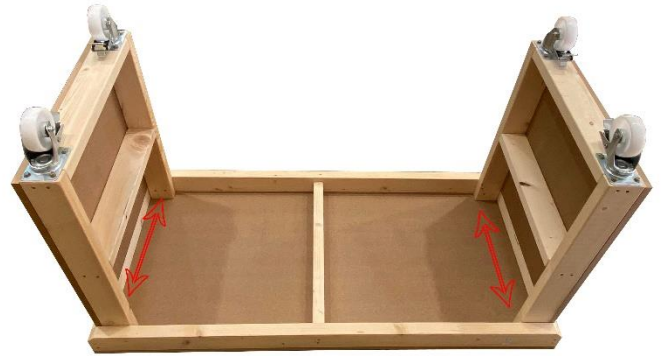


Step 1



Lay the tabletop upside down, as shown in the picture.

Step 2



Place a leg in position as shown. Ensure the leg is pushed into the corner and secure with the supplied screws 60mm screws.

Step 3



Place back panel, make sure that panel is lined up on each side and secure with provide screws (40mm)

Step 4



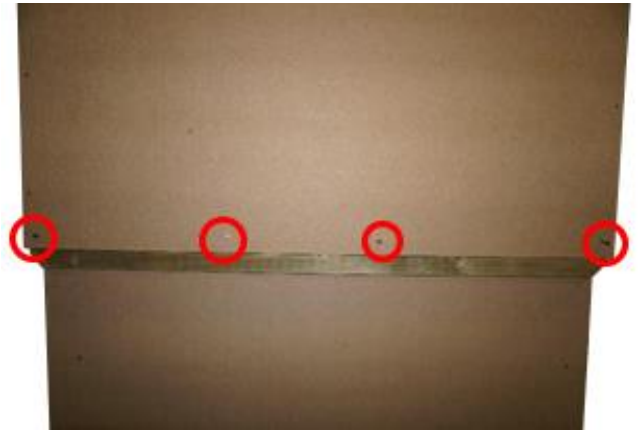
Now flip the workbench on its legs, take out the side panel and slide the shelves in. After sliding the shelves, secure them with the screws via pre-drilled pilot holes.

Step 5



Place the door vertically and horizontally for a good fit and secure the doors to the legs, as shown in the picture.

Step 6



(If you brought a version with the back panel) Place back panel, make sure that panel is lined up on each side and secure with the 40mm provided screws.

Step 5



Don't forget to secure the back panel from the front via pre-drilled pilot holes with the provided 80mm screws.

Your workbench is now completed!

We hope that you found your product quick and easy to assemble but if not and you require further assistance or have any questions you can contact us via details above.

Also, you can check our **YouTube channel** for assemble videos, click on the link below:

<https://youtu.be/y3RjtQm9LE8>

Or

Type in YouTube search box **Arbor Garden Solutions**.