

Tool Trek 3&4 Power Tool Organizer

Before you commence the assembly process, we recommend that you read these instructions thoroughly beforehand to familiarise yourself with the assembly process and to also check that you have the correct components. If for any reason you need assistance, you can find our contact details on the top of the page of these instructions.

We highly recommend that any assembly is carried out on a flat, level surface if possible and that you use another person to assist you if necessary **for your convenience all guide holes are pre-drilled.**

Package contents

- 1x Back panel
- 2x Side panels
- 2x Middle dividers.
- 1x Tool holder panel
- 3x Section dividers
- Drawer parts

Tools required

Spanner or battery-operated drill

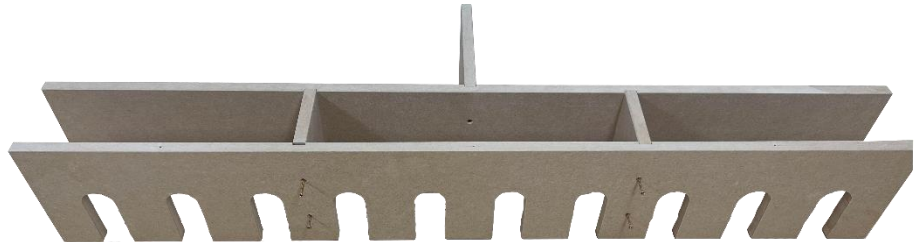


Step 1



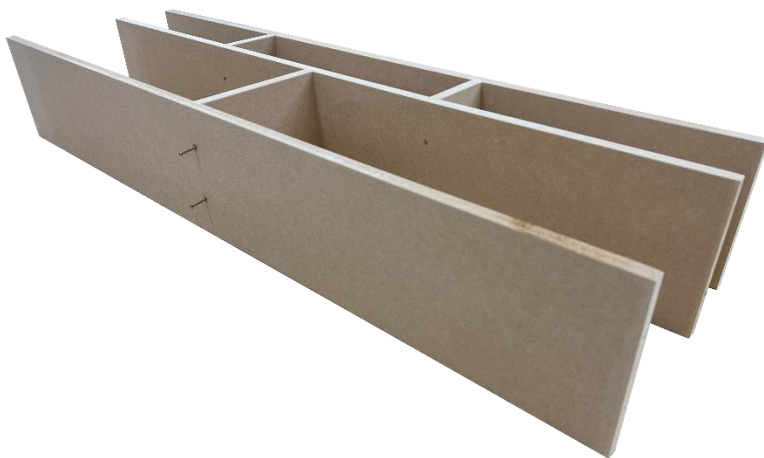
For Step 1 of the assembly process, begin by taking one of the middle panels. Then, attach three of the section dividers to the routed area by securing each one with two of the provided wood screws.

Step 2



In Step 2, you'll need to take the tool holder panel and add it to the two-section divider panels that you previously secured in place. Use four of the provided wood screws to ensure a secure attachment.

Step 3



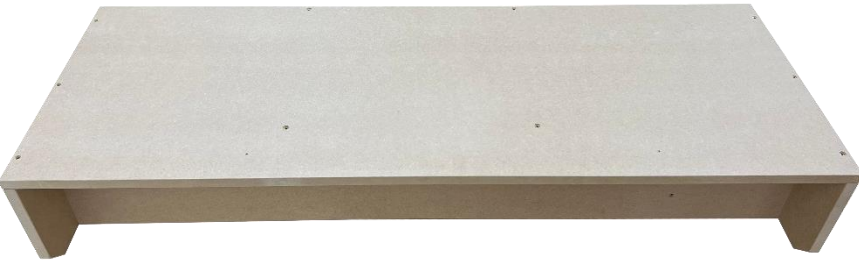
Take the second middle divider panel and add it to the third section divider panel, securing it with two of the provided wood screws as indicated in the picture.

Step 4



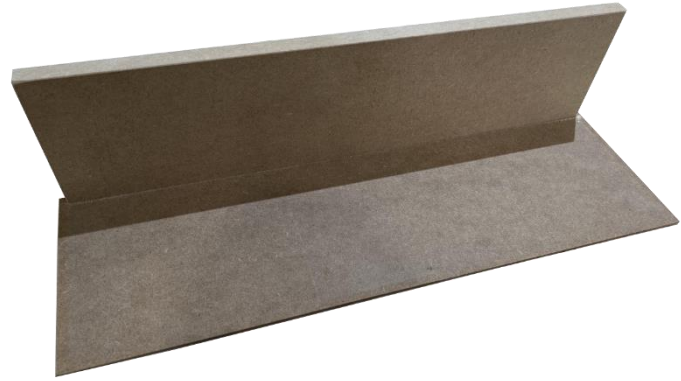
In Step 4, add a side panel to one side of the ToolTrek2 Power Tool Organizer and secure it with six of the provided wood screws, making sure to follow the visual reference in the image. Repeat the same step on the other side, taking care not to mix up the side panels. Also, ensure that the cut edge of both side panels is facing the front of the organizer.

Step 5



Finally, in Step 5, take the back panel and place it on your construction, ensuring that all edges are aligned properly. Secure the back panel in place using the provided wood screws. This will complete the assembly of the ToolTrek2 Power Tool Organizer.

Step 6



Now, for the drawer assembly, take the drawer base board and slide it into the drawers back using the routed lines.

Step 7



Fit the drawer's side panels into their position using routed lines and align them to the back panel. Secure each side panel using 2x confirmat screws.

Step 8



Finally, take the drawer front panel, align it with the sides, push in the baseboard, and secure it using 4x confirmat screws. If you have a two-drawer version, then repeat steps 6-8 for the second drawer assembly.



Phone number: 01945 410950

support@arborgardensolutions.co.uk

<http://www.arborgardensolutions.co.uk>

Trading address: Unit 11, Cattle Dyke, Wisbech, England, PE1 34NR

Tool Trek 3&4 Power Tool Organizer is now completed!

We hope that you found your product quick and easy to assemble but if not and you require further assistance or have any questions you can contact us via the details above.