

## **Animal field shelter with storage tack feed room assembly**

Before you commence the assembly process, we recommend that you read these instructions thoroughly beforehand to familiarise yourself with the assembly process and to also check that you have the correct components. If for any reason you need assistance, you can find our contact details at the top of the page of these instructions.

We highly recommend that any assembly is carried out on a flat, level surface if possible and that you use another person to assist you if necessary **for your convenience all guide holes are pre-drilled.**

**Ensure that you have all the correct parts listed on the front page of these instructions, including any fixings.**

**It's important to note that while mobile field shelters are designed for fields, which often have some degree of unevenness, it's still beneficial for them to be placed on as level ground as possible.**

[Press here for the assembly video](#)

### **Package contents**

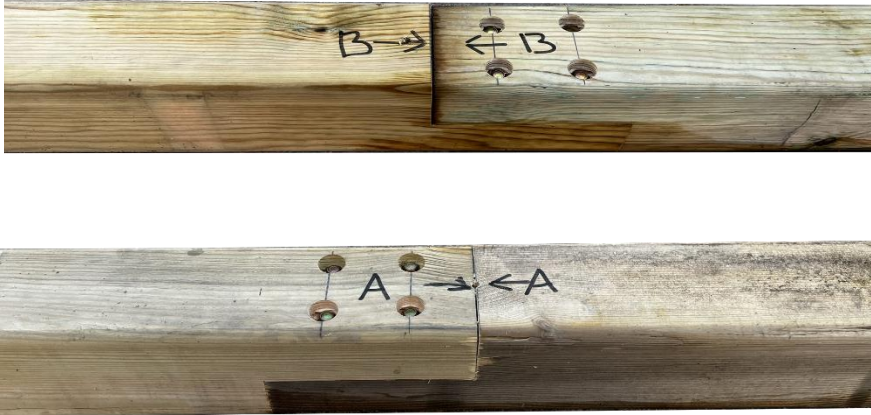
- 4x slides
- L1-L2 (side) panels
- R1-R2 (side) panels
- B1-B2 (back) panels
- FR-FL-FT (Front) panels
- F-L, F-R, F-M Roof triangles
- F-L, F-M Roof covers
- Roof design endboard
- Roof front featheredge cover board
- 14x Rafters
- Roof panels
- Roof corners (B-R, B-L, F-R, F-L)
- Roof middle covers
- Roof end design covers
- 4x Feather edge covers
- Necessary screws and fixings
- Kickboards
- Metal braces for towing the shelter
- Guttering kit (**If purchased one**)

### **Tools required**

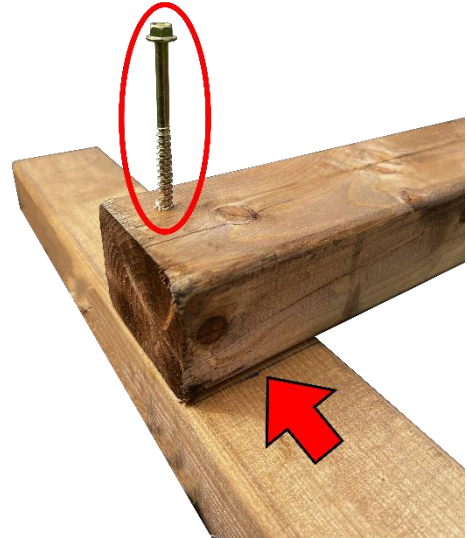
An electric screwdriver (No.2 Pozi bit) or Screwdriver.  
  
Hammer  
  
Handsaw  
  
Ladder



### Step 1



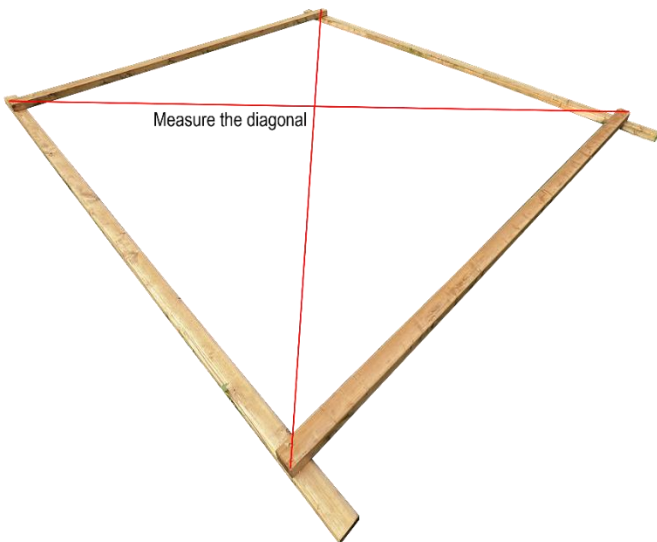
### Step 2



Take the longer posts that have markings A-A and B-B connect them and secure them with 4x coach screws on each connection point.

Now take two of the smaller slides and place them on two of the longer slides as shown in the picture, before securing it with the coach screw or the metal corner make sure that the shorter slides are properly aligned with the marked line.

### Step 3



### Step 4



After securing all 4x corners measure both diagonals they must be the same length to continue your assembly.

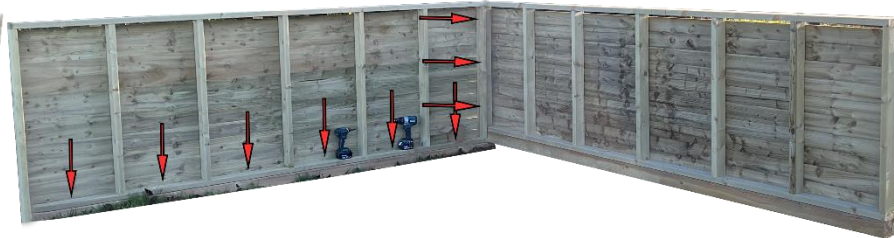
Place the remaining post in the marked area and secure it with the provided coach screws.

### Step 3



Take first half of the back panel which is marked **B1** and fit in on the longer slide securing it with the 6x 70mm coach screws.

### Step 4



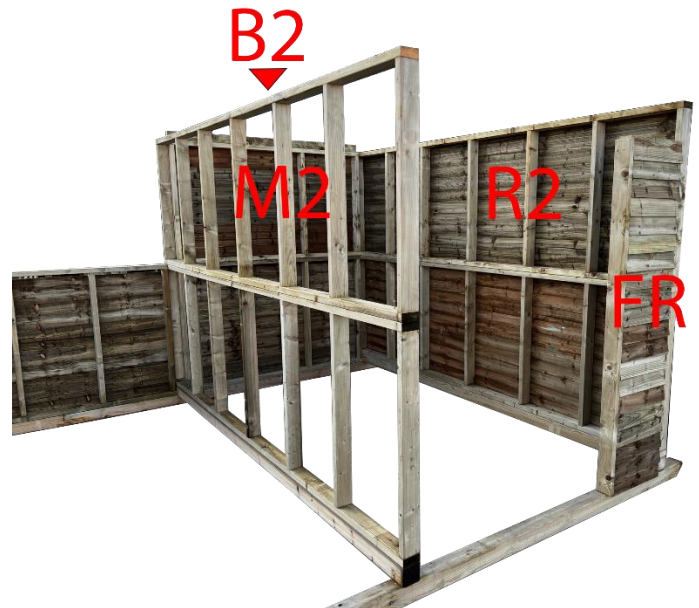
Take the side panel **L1** and secure it to the back panel with the 3x coach screws via predrilled pilot holes after making sure that it's secured fix it to the slide with the 6x 70mm coach screws making sure that everything is evenly aligned

### Step 5



Follow the markings on the panels and secure all the remaining first-floor panels to their places in the same manner as previously through the provided pilot holes.

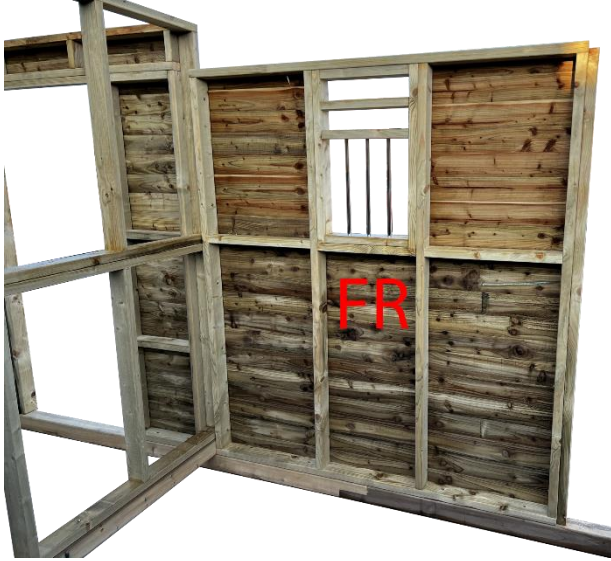
### Step 6



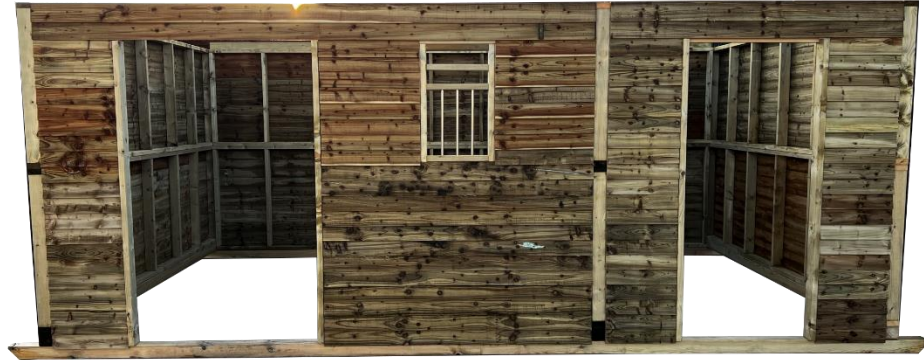
After all panels with markings 1 are secured to their designated places, proceed to the second-floor panel installation, but before that, we would advise securing front shed panels marked FR, FL, FM, etc.



### Step 9



### Step 10



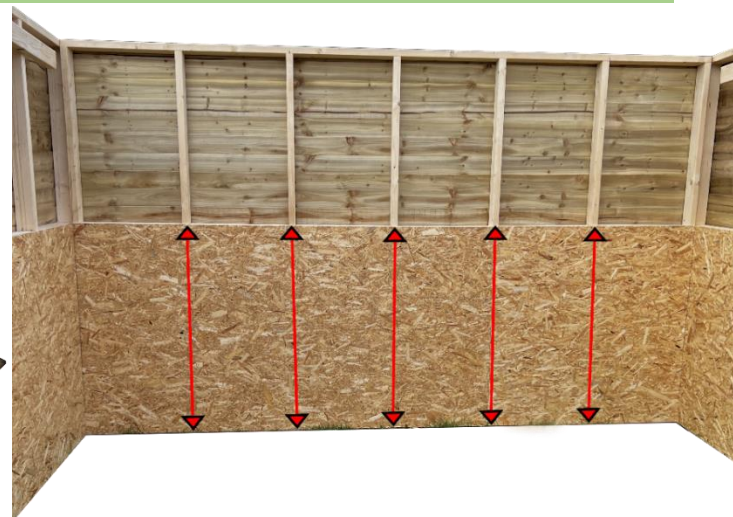
Proceed to install the rest of the panels into their located areas following the markings on the parts.

After all the base panels are secured your assembly should look like in the photograph.

### Step 9



### Step 10

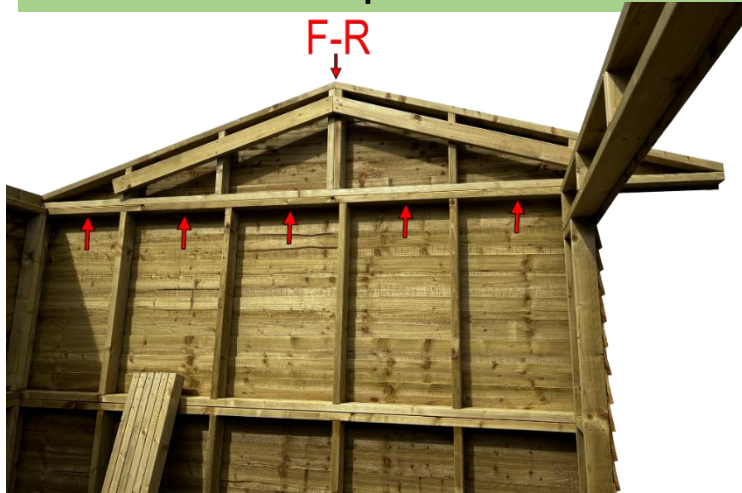


Now place both doors in their designated areas, spacing them out evenly. Secure door hinges to the shelter using 60mm woodscrews.

After making sure that all corpus panels are safe and secured with the necessary wood screws you can go and put on the kickboards in their places. Each OSB board will have its own marking which will show to which position it must go (**Front – Back – Sides**). Secure the kickboard with the 40mm woodscrews.

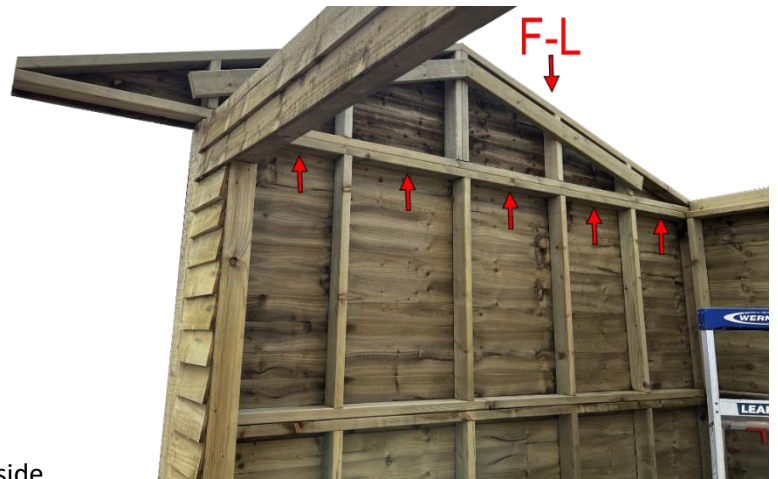
Please note that the Apex roof assembly for all the shelters are generic. Follow the markings on the panels to finish your roof installation.

### Step 11



Position the roof structure triangle labelled "F-R" on the right side of the assembly as shown in the provided picture. Secure the triangle in place using the supplied 70mm coach screws. Insert the screws through the predrilled pilot holes located at the bottom of the structure, following the directional arrows in the diagram.

### Step 12



Repeat the same procedure for the "F-L" triangle on the left side.

### Step 13



Locate the middle triangle labeled F-M. At the back of the shelter, you will find a designated cut-out area. Insert one end of the "F-M" triangle into this cut-out to secure it in place. Proceed to Step 15 at the front of the shelter, where you will find a marked place for aligning the front of the "F-M" triangle.

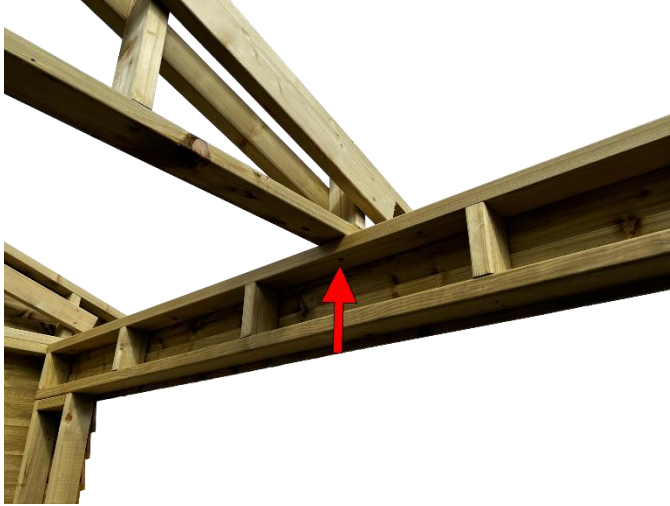
### Step 14



Align the front of the triangle with the marked area and ensure it fits snugly.

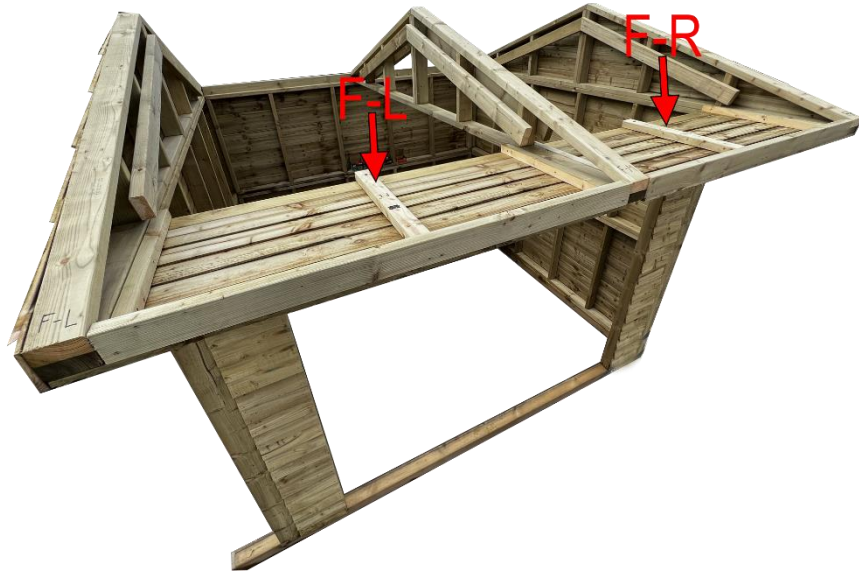


### Step 15



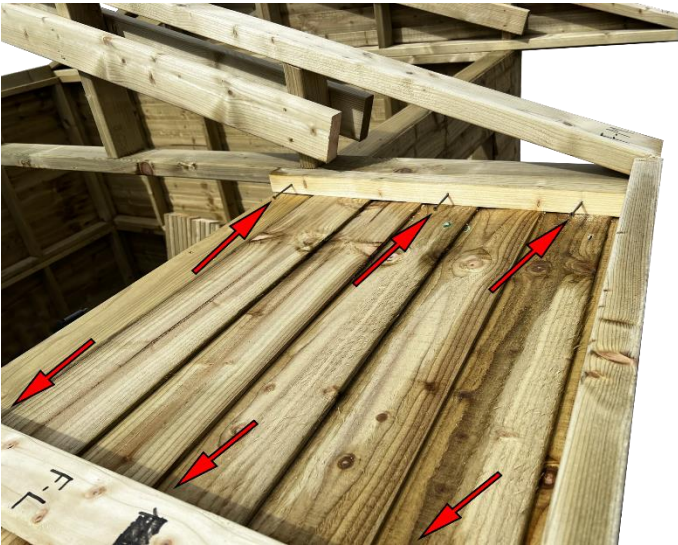
Secure both ends of the "F-M" triangle firmly using the provided 70mm coach screws.

### Step 16



Take the two roof covers marked "F-L" and "F-R." Position the "F-L" roof cover on the left side of the roof, aligning it precisely as shown in the picture. Similarly, place the "F-R" roof cover on the right side of the roof, following the picture for accurate alignment. Ensure that both roof covers fit securely and cover the designated areas completely.

### Step 17



For each roof cover (both "F-L" and "F-R"), secure them in place using six 80mm wood screws. Insert the wood screws through the predrilled pilot holes located on each roof cover. Ensure the screws are tightened securely to firmly attach the roof covers to the shelter's structure.

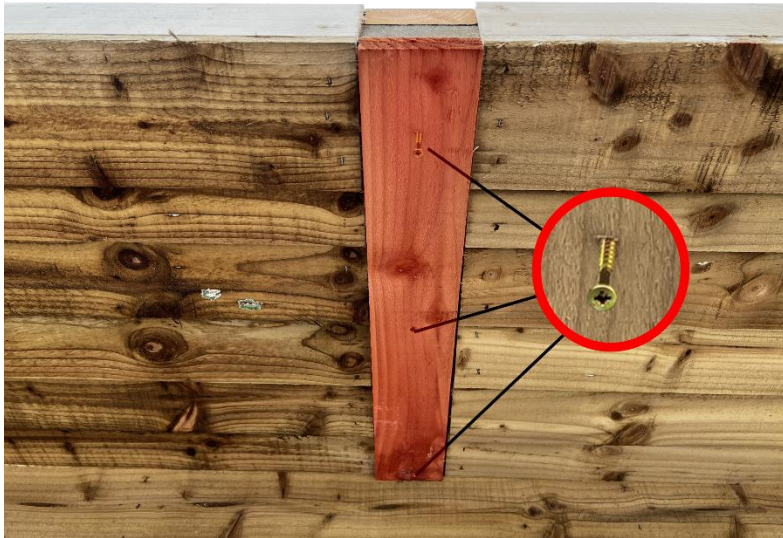
### Step 18



Between each of the roof panels, there is an additional predrilled hole. Insert a 70mm coach screw into these central predrilled holes. Fully tighten the coach screw to securely join the "F-L" and "F-R" panels to the shelter frame.



### Step 19



Position a featheredge board underneath the roof panels to complete the roof design. Secure the featheredge board in place using three 40mm wood screws.

### Step 20



Take the roof front featheredge cover board. Align the pointy end of the cover board with the roof structure, as shown in the illustration or picture. Secure the board in place using 40mm wood screws.

### Step 21



Add the roof rafters to the shelter, ensuring alignment with the triangle dividers. Secure each end of the roof rafter using the provided 120mm wood screws.

### Step 22



Identify the marked places on the highest point of the triangles, which indicate where the roof rafters should be aligned and secured.

### Step 23



Note that the very top rafters should be positioned in the middle, aligning them with the centre of the shelter's roof.

### Step 24



Position the roof panels on top of your assembly, ensuring they cover the entire shelter structure. Leave approximately 7cm (2.75 inches) of the roof panels protruding at both the back and front of the assembly. Use the provided screws with caps to secure the roof.

### Step 25



Keep putting on the rest of the roof panels making sure that the last roof wave would go underneath the new roof wave so that they could have a connection point.

### Step 26



After securely fastening all the roof sheets, proceed to install the roof corners. Each roof corner will have a marking indicating its designated position. For instance, "F-R" indicates Front Right, and there will be similar markings for other corners.



### Step 27



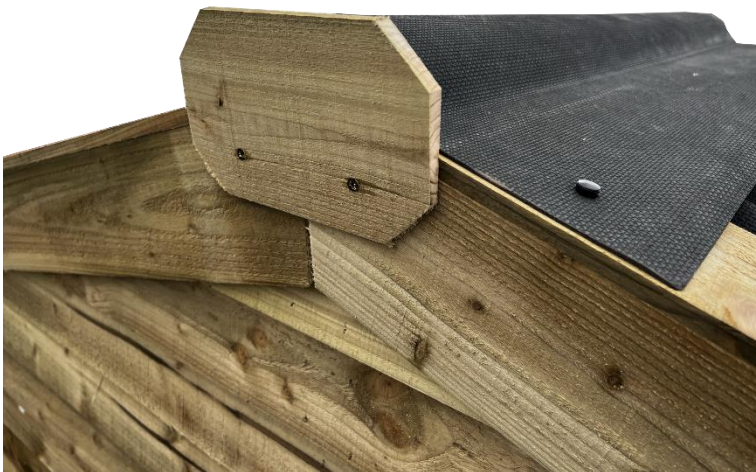
To secure each roof corner, use 8x 40mm screws to firmly attach them from the sides. Evenly distribute the screws along the sides of the corners, ensuring a strong and balanced connection with the shelter's structure. Additionally, use 8x 80mm screws, together with the provided caps, to firmly attach the roof corners from the top. Place the screws evenly and securely along the top of the corners to ensure stability. Take extra care to align the corners precisely with the roof ends, creating a cohesive and structurally sound assembly.

### Step 28



Place the middle roof covers in position, ensuring they are aligned in the middle of the shelter and effectively cover the previously empty gap. Secure each middle roof cover firmly using 80mm wood screws, together with the provided caps.

### Step 29



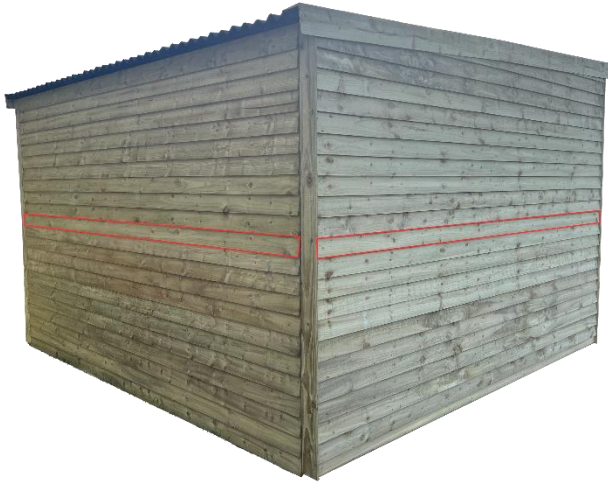
You will be provided with the finish design board to cover the gap in the shelter. Secure the finish design board at the end using 2x 40mm wood screws.

### Step 30



After everything is assembled and secured, take 4x provided featheredge boards and place them as shown in the picture hiding the connection points, leaving the thicker end of the board sticking outside and secure each featheredge plank with the provided nails.

### Step 31



On each of the connection point, there will be one featheredge board which is not attached. Use the provided nails and secure each side of the building.

### Step 32



Attach the metal braces to the corners that are convenient for you using 4x coach screws for each brace.

If you have purchased your shelter with the front guttering, please proceed with the following steps (A to I)

## Fixing Guttering



### Step A



Begin by securing the gutter holders along the front edge of the shelter, leaving approximately 15 cm of space from the edges. Ensure that the gutter holders are not fixed at the same level. For proper water drainage, follow these guidelines:

- Fix the first holder 2-4 cm from the bottom of the front edge of the shelter.
- Place the subsequent holders, maintaining a gradual incline towards the front of the shelter, ensuring the last holder aligns with the bottom of the front cover.

### Step B



Take the gutter pipe and secure one end with the appropriate attachment, ensuring it is properly fixed for water outflow.

### Step C



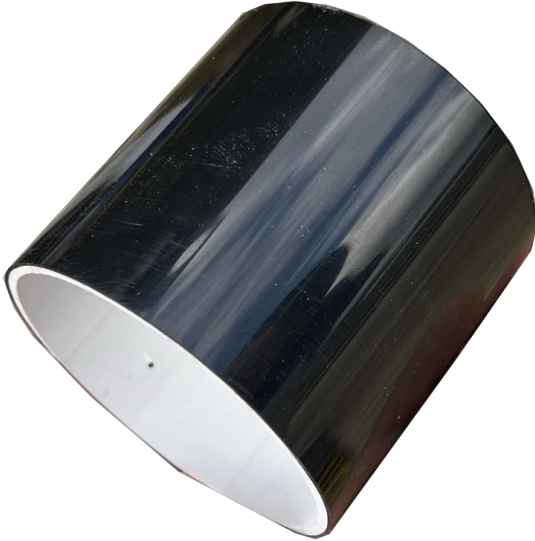
Secure the other end of the gutter pipe with the provided end attachment, as shown in the picture

### Step D



Take the assembled gutter pipe, which includes both ends securely attached with the appropriate fittings. Position the assembled gutter pipe along the previously fastened holders on the front edge of the shelter.

### Step E



Fit one end of the pipe connection tube securely to the drainage system.

### Step F



Take the provided elbow connection component. Attach the elbow connection to the previously fitted pipe connection tube securely.

### Step G



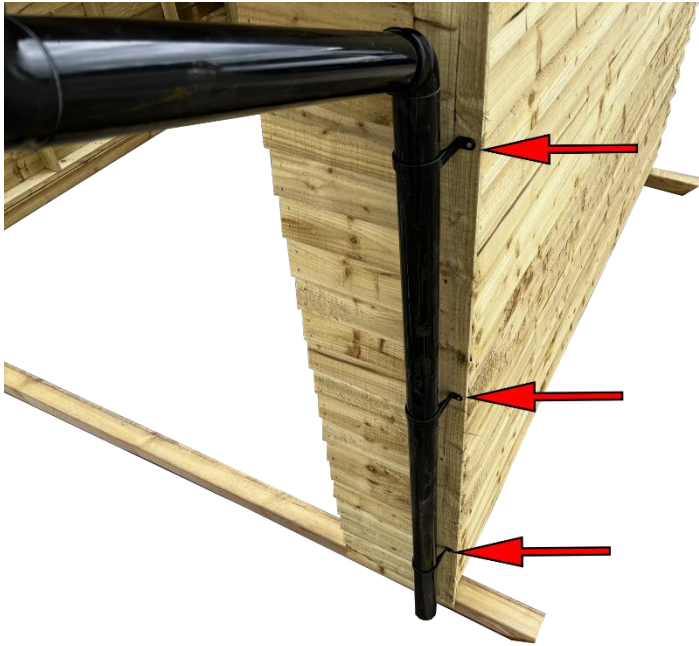
Attach one end of the longer pipe securely to the current structure, positioning it to face the shelter's front.

### Step H



Attach one end of the remaining long pipe securely to your assembly, extending it to complete the drainage system.



**Step I**

Securely attach the long pipe to the front edge of the shelter using the 3x provided pipe brackets. Insert the provided 40mm woodscrews through the predrilled holes on each bracket to firmly attach them to the shelter's structure.

## **Animal Field shelter with storage tack feed room is now completed!**

We hope that you found your product quick and easy to assemble but if not and you require further assistance or have any questions you can contact us via the details above.

Also, you can check our **YouTube channel** for assemble videos, click on the link below:

<https://www.youtube.com/watch?v=fNW8dzgXXZ0>

Or type in YouTube search box Arbor Garden Solutions.