

### Generic build instructions – Express workbench

Before you commence the assembly process, we recommend that you read these instructions thoroughly beforehand to familiarize yourself with the assembly process and to check that you have the correct components. If for any reason you need assistance, you can find our contact details on the top of the page of these instructions.

We highly recommend that any assembly is carried out on a flat, level surface if possible and that you use another person to assist you if necessary.

*Please note: If this product is delivered to you by a Parcelforce, it is split into 2 compartments. If you have received only 1 package, the second package will be delivered to you the following working day.*

You can check our **YouTube channel** for assemble videos.

**Please type in YouTube search – Express Workmate**

[Please click here](#)

#### Package contents

1x Tabletop  
2x Sets of legs  
1x shelf **(for double shelve option 2x)**  
4x braces + fixings

#### Tools required

Electric screwdriver (No.2 Pozi bit) or  
Screwdriver

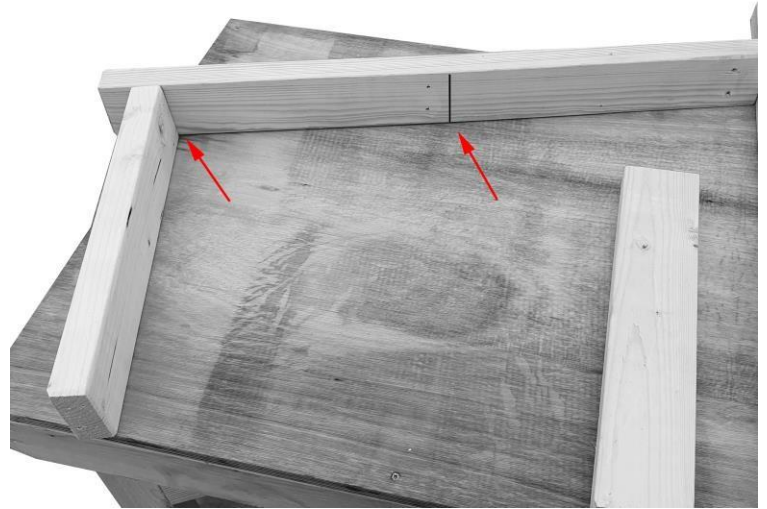


## Step 1



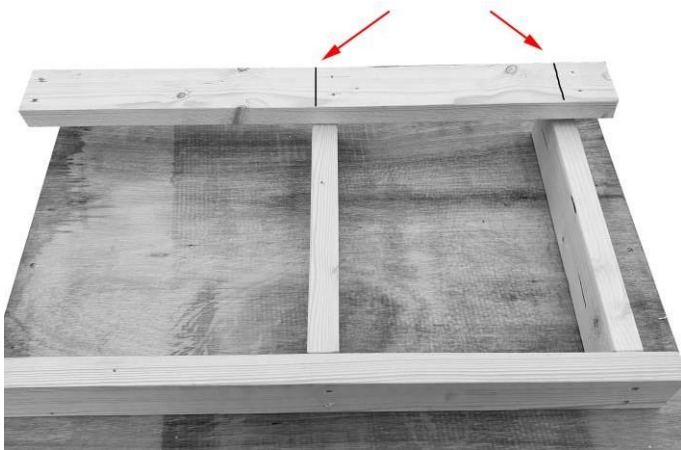
Lay the leg uprights and brace on the flat surface. **(for single shelf version 1x cross brace, for double shelf version 2x cross braces)**

## Step 1.1



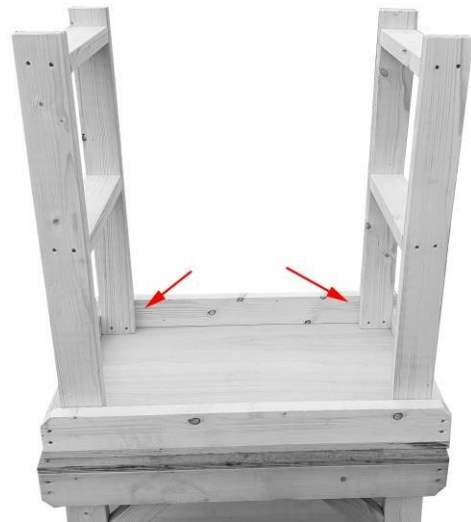
Use pencil marks to level your cross brace and secure with 80mm screws. **Ask for assistance if needed.**  
**For double shelf option please repeat this step twice.**

## Step 1.2

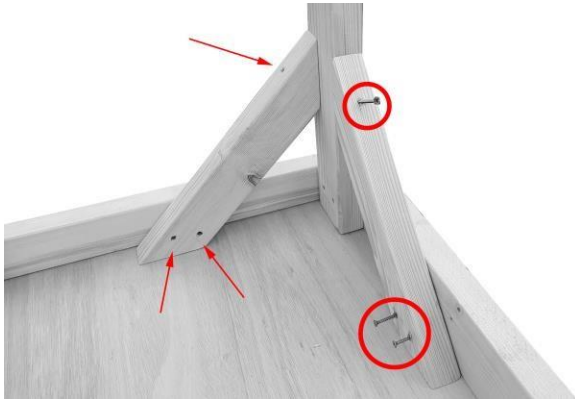


Now, repeated 1.1 step for the other side.

## Step 2



Now, place tabletop on flat and levelled surface. Place finished legs into place as shown in the picture. Make sure that legs are pushed flush to end and secure using 60mm screw via pre-drilled guide holes. **Repeat this step on both sides.**

**Step 3**

Now, place braces as shown in the picture and secure using 60mm screws via pre-drilled guide holes. Make sure that braces are flush with leg upright and tabletop. **Repeat this step on both sides.**

**Step 4**

Place workbench back on its feet. Slide base shelf into position and secure using golden 40mm screws via pre-drilled guide holes on both sides. **If you have double shelf version, repeat this step twice.**

**Your workbench is now completed!**

We hope that you found your product quick and easy to assemble but if not, remember you can always check our YouTube channel for assembly video – **just type into YouTube search “Express Workmate” or press on the attached link below:**

<https://www.youtube.com/watch?v=9xdgDoFiQ2c>

Or if you require further assistance or have any questions you can contact us via the details above.