

Classic Pub Style Picnic Bench and Table

Before you commence the assembly process, we recommend that you read these instructions thoroughly beforehand to familiarise yourself with the assembly process and to also check that you have the correct components. If for any reason you need assistance, you can find our contact details on the top of page of these instructions.

We highly recommend that any assembly is carried out on a flat, level surface if possible and that you use another person to assist you if necessary **for your convenience all guide holes are pre-drilled.**

Please note: If this product is delivered to you by a Parcelforce, it is splitted into 2 compartments. If you have received only 1 package, the second package will be delivered to you the following working day.

You can check our **YouTube channel** for assembly video.

[Please click here](#)

Package contents

- 1x Tabletop
- 2x Seats
- 2x Table A-Frames
- 2x Cross braces
- 1x Bundle with fixings

Tools required

10mm socket head
Spanner or battery-operated drill
Hex key

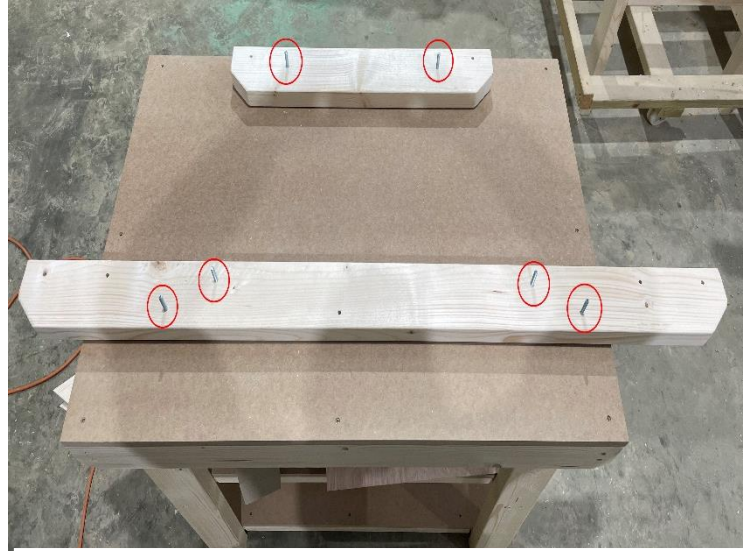


Step 1



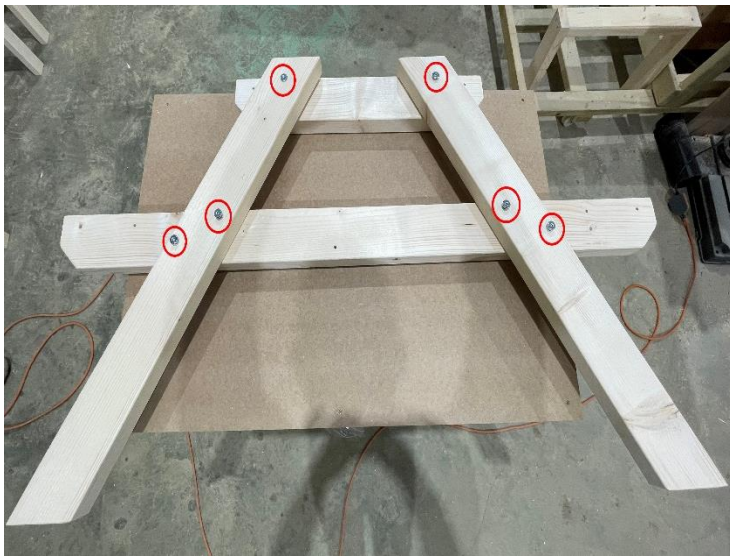
Ensure that you have all of the correct parts as listed on the front page of these instructions, including any fixings.

Step 2



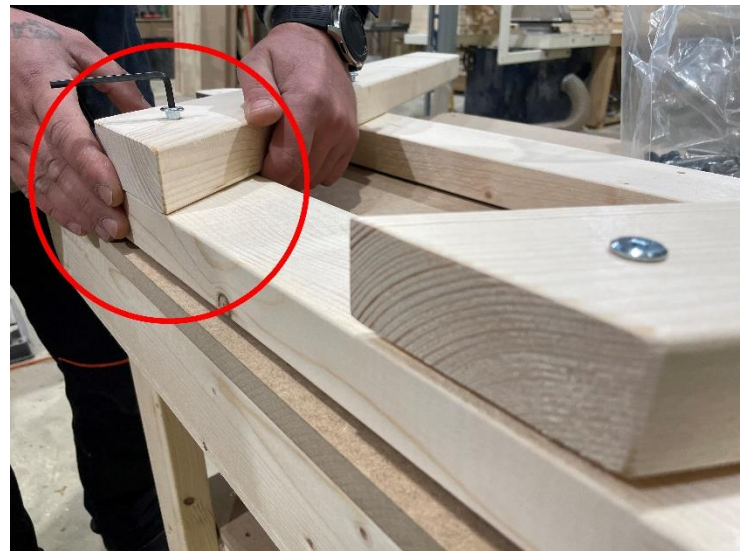
Put the provided bolts in the marked holes to the same planks which are shown in the picture and make sure that the bolt ends are facing up.

Step 3



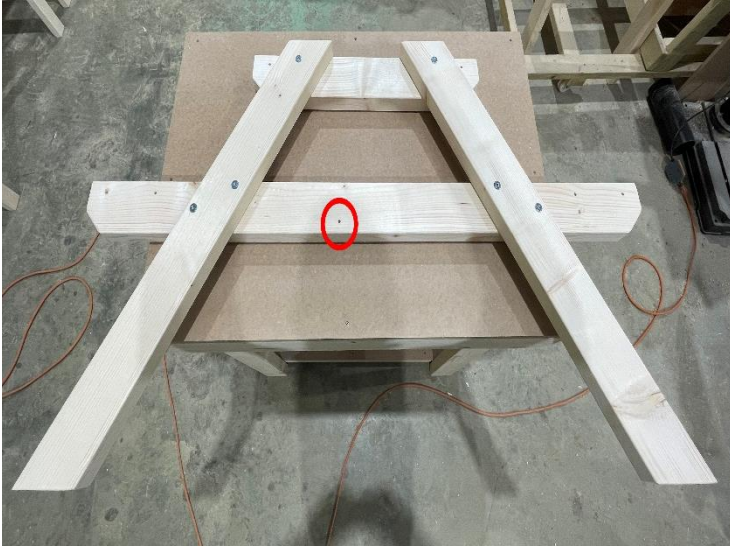
Place 2x planks which are shown in the picture on top of the previous planks making sure bolts fitted previously goes through the correct pilot holes.

Step 4



Before securing the top of the leg with bolts and nuts make sure that it is aligned and sits parallel straight with the other side of the leg. After aligning and screwing the top of the A-frame secure the rest of the bolts with the provided nuts.

Step 5



This is how your finished A-frame leg should look like. Repeat steps 2 to 4 to finish the other leg. Before assembling the other leg make sure that the hole which is marked in the picture would be facing the same direction as it is on the first leg.

Step 6



Lay the tabletop upside down on a clean, flat surface taking care not to damage it. Now line up one of the table A-frames centrally on the tabletop as shown in step 6.

Step 7



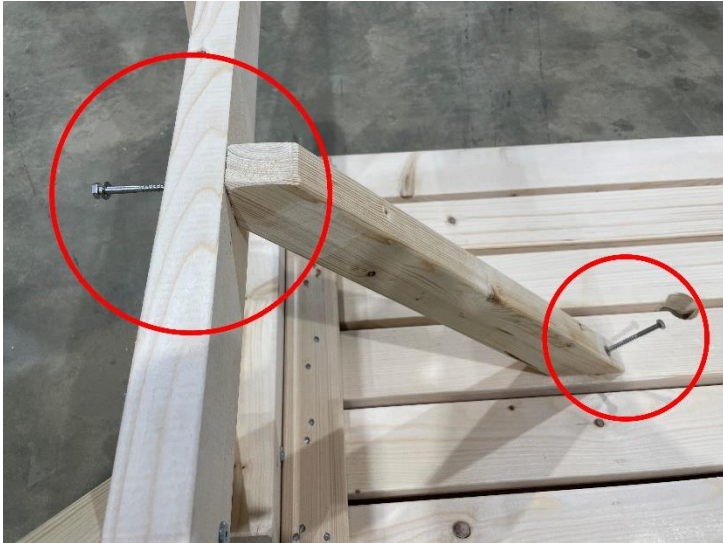
Place one of the table A-frames centrally against the fixing batten ensuring that the gap at the table edge is the same on both sides.

Step 8



Now, using 2 of the supplied coach screws and the pre-drilled holes, secure the table A-frame to the fixing batten on the tabletop.

Step 9



Ensure that the brace is lined up centrally on the table and attach it to the A-frame with a coach screw. Make sure that the brace is still aligned centrally on the table and affix the other end to the tabletop with a coach screw as shown. Repeat steps 6-8 to finish the table assembly and proceed to step 9.

Step 10



Turn the table assembly right side up in preparation for attaching the seat panels.

Step 11



Align the seat panel batten with the outer end of the A-frame as shown and repeat for the other end of the seat panel. Using the coach screws provided attach the seat panel to the A-frame at both ends of the bench.

Step 12



Finally, cover any exposed coach screw heads with the cover caps provided. Your Classic Pub Style picnic bench and the table are now complete.



Phone number: 01945 410950

support@arborgardensolutions.co.uk

<http://www.arborgardensolutions.co.uk>

Trading address: Unit 11, Cattle Dyke, Wisbech, England, PE1 34NR

Your picnic table and bench set are now completed!

We hope that you found your product quick and easy to assemble but if not and you require further assistance or have any questions you can contact us via details above.

Also, you can check our YouTube channel for assemble videos, click on the link below:

<https://www.youtube.com/watch?v=CwA9MoUin9M>

Or

Type in YouTube search box Arbor Garden Solutions.