

Alders Picnic Table and Bench set assembly instructions

Before you commence the assembly process, we recommend that you read these instructions thoroughly beforehand to familiarise yourself with the assembly process and to also check that you have the correct components. If for any reason you need assistance, you can find our contact details on the top of page of these instructions.

We highly recommend that any assembly is carried out on a flat, level surface if possible and that you use another person to assist you if necessary **for your convenience all guide holes are pre-drilled.**

You can check our **YouTube channel** for assembly video.

[Please click here](#)

Package contents:

- 1x Tabletop
- 2x Benchtops
- 2x Table leg frames
- 4x Seat leg braces (8x for the 8FT version)
- 2x Table leg braces
- 4x Bench legs (6x for the 8FT version)
- 2x Bench backrests
- 4x Backrest braces
- 2x Bench and table connecting braces
- M8 Coach screws
- Back caps

Tools required:

10mm socket or spanner



Step 1



Lay the tabletop upside down on a clean, flat surface, taking care not to damage it. Now line up one of the table A-frames centrally on the tabletop as shown in step 2.

Step 2



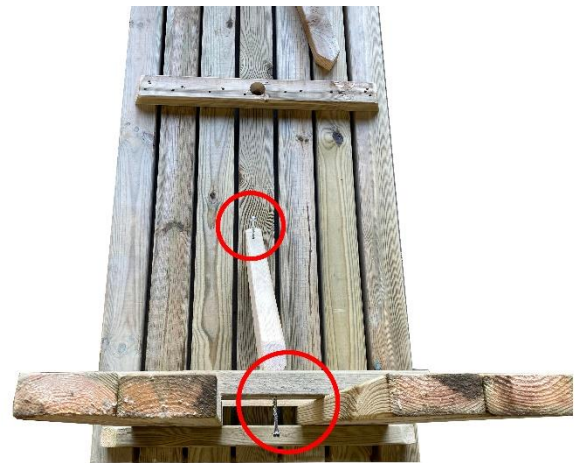
Place one of the table leg frames centrally against the fixing batten, ensuring that the gap at the table edge is the same on both sides. Now, using 2 of the supplied coach screws and the pre-drilled holes, secure the table leg frame to the fixing batten on the tabletop.

Step 3



Using one of the supplied coach screws and the predrilled holes, secure the table leg frame to the fixing batten on the tabletop.

Step 4



Place a cross brace in position as shown, ensuring that it is flush with the underside of the table frame and secure it with the provided coach screws.

Step 5



Turn the table right side up. Place one of the leg braces centrally against the table leg frame as shown.

Step 6



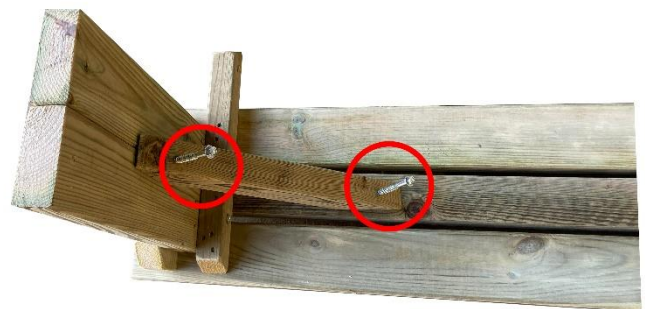
Using the pencil lines on the leg brace as a guide, line up the brace in the correct position and attach it to the bottom of the table leg frame using a coach screw. Then secure the other end of the brace in the same manner.

Step 7



Lay one of the seat panels upside down on a flat surface as shown, then align one of the seat leg frames centrally across the seat panel and secure the provided coach screws.

Step 8



Place a seat leg brace in position and, as you did for the table. Ensure it is centrally aligned. Attach one of the seat leg braces to the other end of the seat unit and then repeat until both seats are done. **If you have an 8ft version then please continue to step 8.1 if not you can skip to step 9.**

Step 8.1



Measure the distance between the left and middle battens and then between the middle and right battens on the underside of the bench top, and place the third middle support leg, made from a 2x6 timber plank, in the middle of the larger gap, securing it with two of the provided coach screws.

Step 8.2



Take two of the support braces, align them with the predrilled holes on the third support leg, and secure them to the middle leg using the provided screws.

Step 8.3



Once the braces are secured to the third leg, attach the other end of each brace to the bench top using the provided coach screws, using the predrilled pilot holes.

Step 9



Align backseat brace as shown in the picture to complete bench and secure it with provided screws in the middle. Repeat until all four backseat braces are securely attached in the middle.

Step 10

Align bench backrest to backseat brace as shown in the picture and secure it with two provided coach screws. Repeat same step on the other bench.

Step 11

Place bench to completed table and align backseat braces at the edge of table leg braces as shown in the picture, secure bench legs and back seat braces with the provided coach screws.

Step 12

Congratulations, your Alders picnic set is now completed!

Your picnic table and bench set are now completed!

We hope that you found your product quick and easy to assemble but if not and you require further assistance or have any questions you can contact us via details above.

Also, you can check our **YouTube** channel for assemble videos, click on the link below:

<https://www.youtube.com/watch?v=wi5hfhk76ec&t=29s>

Or

Type in YouTube search box **Arbor Garden Solutions.**